



TOOT·HILL
COLLEGE

BINGHAM • NOTTINGHAM



Prospectus

Contents

Welcome	04_05
Ofsted & Results	06_07
Ethos & Aims	08_09
High Aspirations	10_11
Enrichment	12_13
Facilities & Environment	14_15
Advice and choosing the right subjects	16_17

Courses	
Accounts	19
Art & Design	20_21
Biology	22_23
Applied Business	24_25
Chemistry	25
Drama and Theatre Studies	26_27
Economics	28
English Language & Literature	29
English Literature	32
EPQ	33
Fashion & Textiles	33
Food Technology	34_35
Geography	36_37
History	38
ICT	39
Law	40_41
Mathematics	42_43
Further Mathematics	42_43
Media	44
Modern Foreign Languages	45

Music	46_47
Philosophy and Ethics	48_49
Photography	50_51
Physical Education	52_53
Physics	54_55
Product Design	56
Psychology	57
Sociology	58
BTEC Level 3 Art & Design	59
BTEC Level 3 ICT Subsidiary Diploma	60
BTEC Level 3 ICT Diploma	61
BTEC Level 3 Diploma in Sport / Subsidiary Diploma Sport	64
BTEC Level 3 Diploma Applied Science	65
CACHE Level 3 Diploma Childcare and Education	68
Application Form	69_70

Welcome

If you are serious about your future and have the motivation to work to your full potential then we sincerely believe Toot Hill College is the place for you.

We are an inclusive, high achieving college providing a wide range of A level and BTEC courses. This choice allows our students to make the right decisions and secure for themselves the very best life chances.

Toot Hill College has an outstanding reputation for pastoral care and each student is supported and guided throughout their time at the college. This ensures that all our students achieve their full potential and are well equipped to move onto university, college or work.

We look forward to welcoming you to Toot Hill College and helping you to make the very most of your future.





Ofsted & Results

Year 13 A level result, 2012:

	A* - A	A* - B	A* - C
College	37.9%	57.4%	83.5%
National	26.6%	52.6%	76.6%

The 2012 examination results exceeded all previous achievements; with an effective 100% pass rate and 83.5% of all entries graded A* - C most students were successful in securing their first choice university place.

21 students secured 3 or more A*/A grades and 38% of all entries were graded A*/A.

The results were significantly above national trends reflecting the high academic rigour expected within the college.

Ofsted in their 2011 visit stated that sixth form provision was good with good leadership and management enabling students to achieve good outcomes.

The summer examinations 2011 would meet their criteria for 'outstanding' with higher grades consistently and significantly above average.





Ethos & Aims

The college offers high quality teaching in dedicated learning environments with the aim of enabling all students to be successful in their chosen educational and career aspirations.

The college sets high expectations for all students to ensure they have the best possible life opportunities. We aim to support and develop each individual student holistically on their path to adulthood.

The college facilitates opportunities to promote student initiative and responsibility through decision making that is open and responsive to students' needs.





“When I decided to apply to Oxford the advice and encouragement I received from staff was incredible.

From filling in my UCAS form to preparing for interview, I was supported at every stage of the process and that gave me the confidence to believe in myself and achieve my full potential.”

Imogen O'Sullivan

Undergraduate, Oxford University

High Aspirations



Enrichment

Level 2 Award in Community Sports Leadership (CSLA):

An engaging and practical experience that enables students to develop leadership, communication, organisation and teamwork skills through the planning and leading of sports festivals for local primary school children.

Silver Duke of Edinburgh Award (DofE):

This enables students to experience new activities, develop skills and contribute to the local community with assessment through completion of a logbook and final expedition.

World Challenge:

A two week expedition that provides the ultimate opportunity to respond to mental and physical challenges that will enable students to develop skills and gain experiences that will stay with them for life.

Young Enterprise:

A national competition where students form a company to design, create, advertise and sell a product or service to be showcased at local and regional events with support from business leaders in the local community.

Inspired Awards Scheme:

A national programme offering accreditation for volunteering in the school and local community; students are provided with opportunities to volunteer in subject curriculum classes or after school clubs, work with individual pupils through learning support or become an Arts Academy mentor working with pupils from local primary schools. College students also facilitate an annual Children's Christmas Party for pupils from an inner city primary school and Christmas Tea Dance for the residents of Bingham.

Students' Union:

An active Students' Union enables greater autonomy for students in the creation of a 'higher education' ethos and provides opportunities for consultation regarding key college decisions. Sub-committees take responsibility for key college foci including teaching, learning and higher education, facilities, events (such as the annual Summer Ball) and the college magazine.

Sport enrichment programme:

Students are provided with an opportunity to utilise the extensive leisure facilities available and set up college teams to compete against other local colleges.







The college has an excellent range of facilities available to students including:

- Dedicated study facilities in the expressive arts area, assessment centre and learning resource centre
- Extensive computing and ICT facilities (with an opportunity to lease equipment)
- A new design, technology and graphics area
- A new expressive arts area (Year 12 mentor base) with drama, art and music facilities (including drama studios, photography dark room facilities, college art studio and music practice rooms)
- Eleven science laboratories
- College common room (the 'Beach Hut') with catering services available from breakfast onwards
- Exclusive use of Bingham Leisure Centre with subsidised gym membership

Facilities & Environment

Advice and choosing the right subjects

The college provides a dedicated mentoring programme.

In Year 12 the programme incorporates:

- Talks from College Alumni regarding life at university
- Study skills to help GCSE to AS transition
- Dedicated one to one interviews
- Clear and transparent targets
- Career pathways
- Revision and study support

In Year 13 the focus is on university, college and work applications. Mentors provide support in the following areas:

- Writing UCAS personal statements
- Writing letters of application for employment
- Choosing courses
- Looking for jobs
- Providing university and job references
- Offering study and revision support

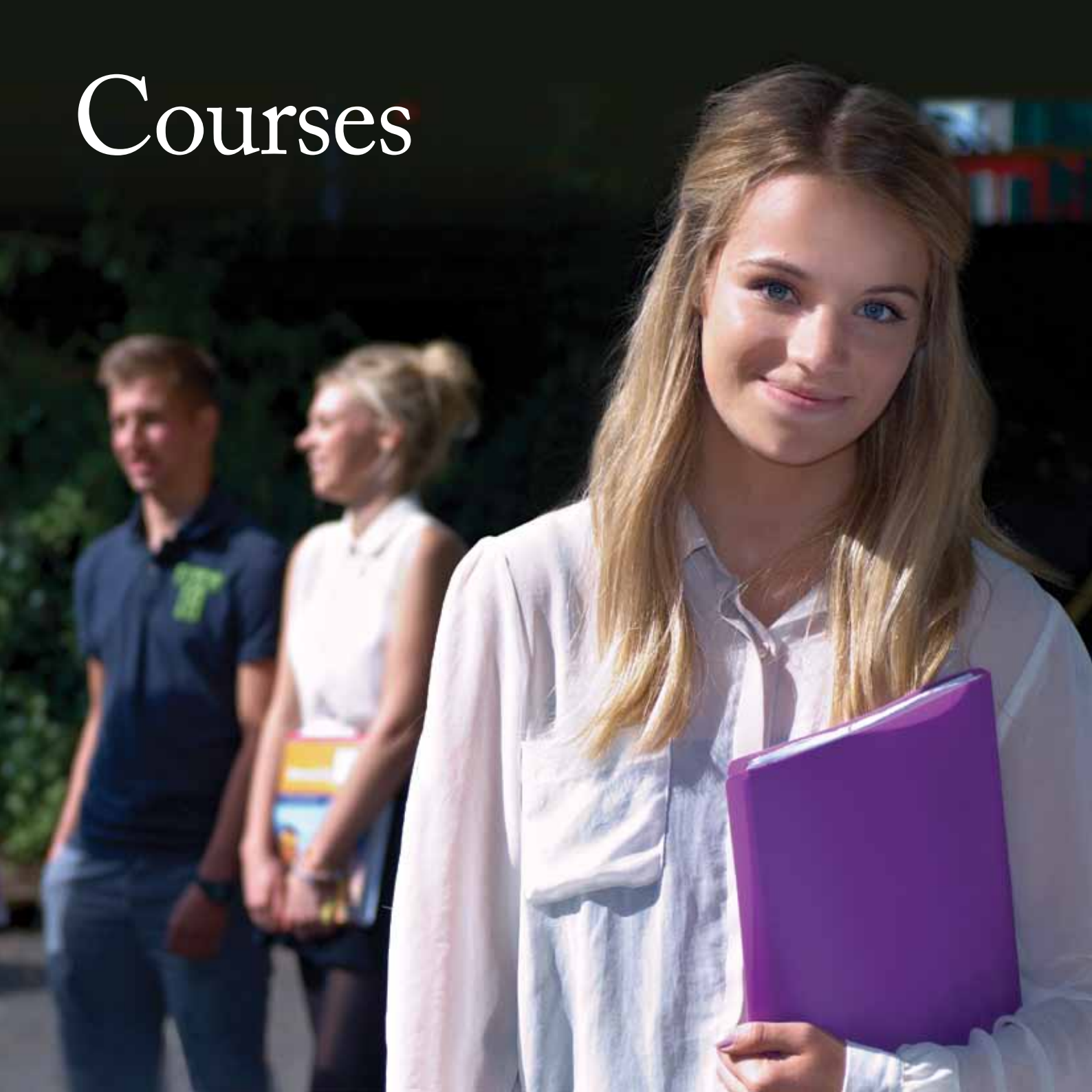


“Students rightly speak very highly of the support they receive from their mentors overall during their time in the sixth form and in making university applications.”

Ofsted, 2011



Courses



Accounts

Course Overview

The AS modules focus heavily on small companies and financial accounting whilst the A2 modules look at accounting in larger firms and management accounting.

You'll begin with the basics: source documents and ledger accounts. You will then move onto trial balances, income statements and balance sheets for sole traders, partnerships and limited companies. Other topics include costing, budgeting, ratio analysis, capital investment appraisal and non-financial factors affecting the decision making process.

Assessment

Year 1 - AS Level - 2 modules

- ACCN 1: Exam (1.5 hours)
 - ACCN 2: Exam (1.5 hours)
-

Year 2 - A Level - 2 modules

- ACCN 3: Exam (2 hours)
 - ACCN 4: Exam (2 hours)
-

Entry requirements

B grade in Maths.

Where Can It Lead?

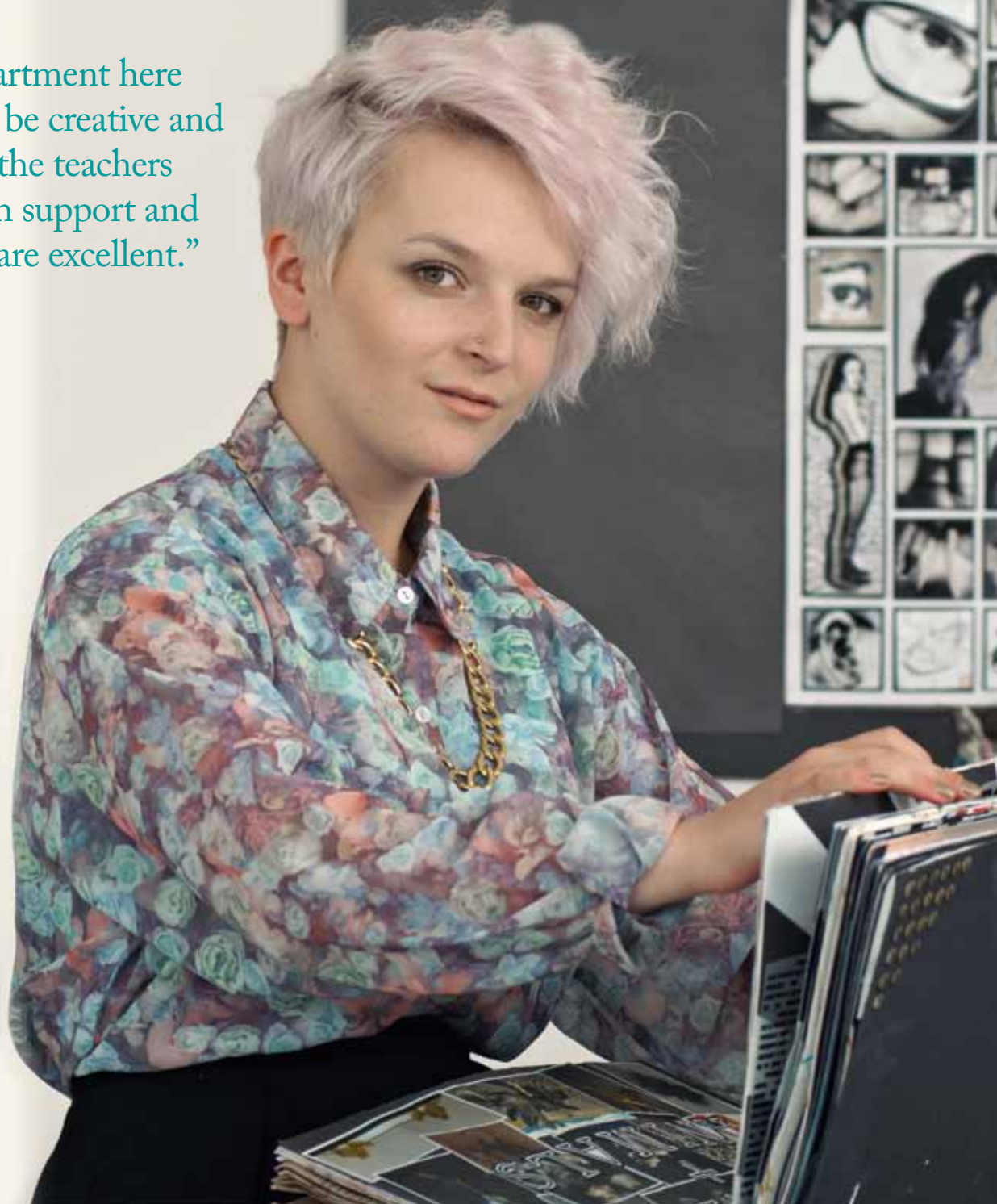
The course is ideally suited to prepare students for a career in Accounting, Business Management or as an opportunity to show a wider understanding of how maths is applied in the commercial world.

“Accounts gives me a great understanding of how a company is financed.”

Kris West

“The Art department here allows me to be creative and imaginative, the teachers offer so much support and the facilities are excellent.”

Rachel Allcoat





2 Year Course AS/A2 Level

Art & Design

Unendorsed

Course Overview

Students will be encouraged to pursue their own lines of enquiry informed by guided cultural, contemporary and historical references. They will explore different types of art in a range of mediums such as Fine Art, Graffiti, Art Textiles, Digital Art and Sculpture design. Students are required to produce work that is exciting, innovative and contemporary. Students will show evidence of trying to extend their own and others ways of seeing the world through individual thought, feelings and observations.

Assessment

Year 1 - AS Level

- September - January (60% coursework)
- February - May (40% exam and exam preparation time)

Year 2 - A2 Level

- September - January (60% coursework)
- February - May (40% exam and exam preparation time)

Entry requirements

GCSE A* - C.

Where Can It Lead?

The department has strong links with local Art Foundation Courses and 40% of A-Level students choose to study Art related courses at University to further their education.

Biology

Course Overview

The AS course looks at different types of biological organisms, how this variation is brought about and explores how they function and survive in their environment. Students will initially look at the structure of some human systems, the diseases that can affect them and ways in which the body's defence mechanisms work. At the end of Year 12 students continuing with Biology at A2 level are invited on the field trip to Wales which provides the exciting opportunity to study organisms in their natural habitat of the sea shore. The A2 course extends and deepens knowledge of Biology and introduces students to the innovative and rapidly expanding areas of gene technology.

Assessment

Year 1 - AS Level

- BIOL 1 - Biology and disease - (June entry)
 - BIOL 2 - The variety of living organisms (June entry)
 - BIOL 3 - Practical skills assessment (ISA)
-

Year 2 - A2 Level

- BIOL 4 - Populations and environment (June entry)
 - BIOL 5 - Control in cells and in organisms (June entry)
 - BIOL 6 - Practical skills assessment (ISA)
-

Entry requirements

GCSE Science A* - B.

Where Can It Lead?

The course is an ideal stepping stone to the many fields of work and study in biology or the other sciences. Such examples include medicine, nursing, dentistry, veterinary / equine studies, drug research and development, marine biology, genetics, biotechnology industries, environmental work, agriculture and zoology.

“The AS level course really stimulated my interest in Biology. It is a challenging subject where sometimes we were developing our knowledge from at GCSE or learning about completely new areas of Biology. The field trip at the end of the year was both a fantastic life and learning experience and I am looking forward to continuing the subject at A2 level.”

Adam Edwards



Applied Business Studies

Course Overview

This course combines coursework and exams and covers a range of business topics including human resources, operations management and external influences. It also develops knowledge on business management, finance and marketing. Each coursework element is a substantial project but it will be broken down into subtasks with formal deadline set every two to three weeks. Students need to be organised and motivated.

Assessment

Year 1 - AS Level - 3 modules

- BUS1: Coursework
- BUS2: Coursework
- BUS3: Exam (1 hour)

Year 2 - A Level - 3 modules

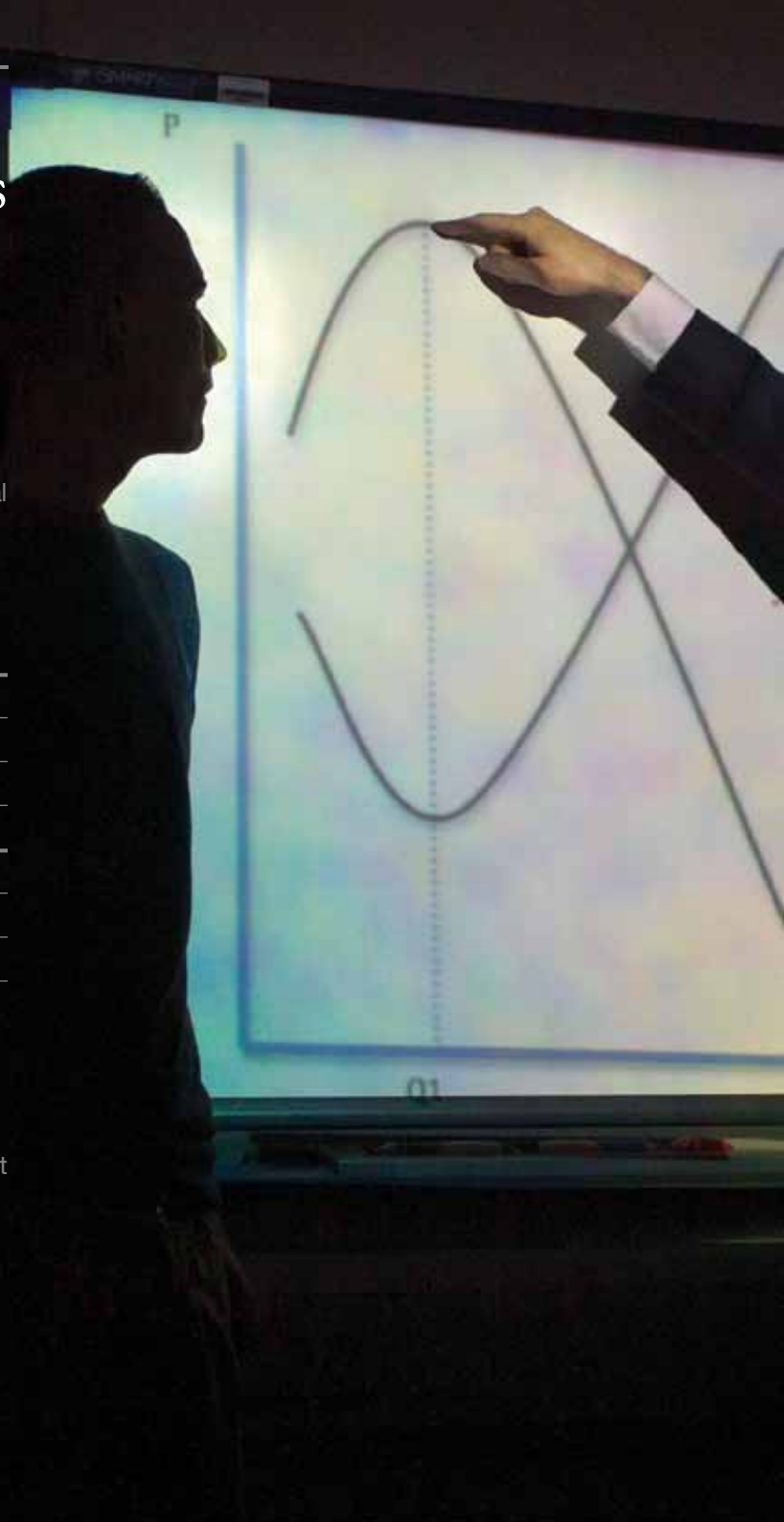
- BUS8: Coursework
- BUS10: Coursework
- BUS12: Exam (1 hour)

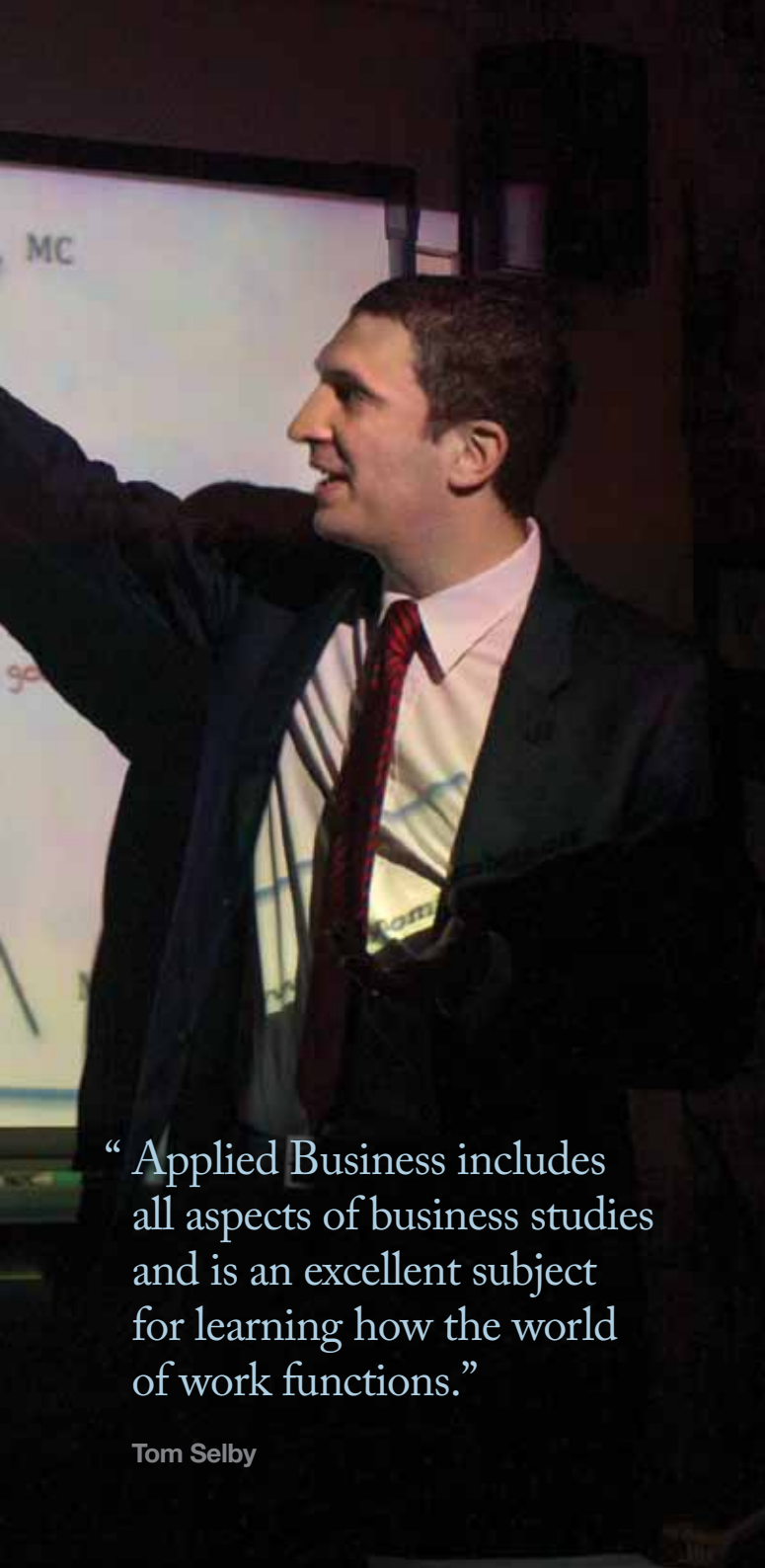
Entry requirements

B grade in Maths and English.

Where Can It Lead?

Business is a long established, popular AS/A2 level subject accepted for university entrance. Business combines well with all other subjects including Accounting and Economics.





“Applied Business includes all aspects of business studies and is an excellent subject for learning how the world of work functions.”

Tom Selby

2 Year Course AS/A2 Level

Chemistry

Course Overview

The course will build on and extend topics covered at GCSE level. You will develop your practical and problem solving abilities through the completion of experimental investigations. Reading around the subject will be undertaken to broaden your subject knowledge and understanding.

Assessment

Year 12 - AS Level

- External examination: 1 hour and 15 minutes.
 - External examination: 1 hour and 45 minutes.
 - Internal assessment of practical skills.
-

Year 13 - A2 Chemistry

- External examination: 1 hour and 45 minutes.
 - External examination: 1 hour and 45 minutes.
 - Module 6 - Internal assessment of practical skills.
-

Entry requirements

GCSE A* - C.

Where Can It Lead?

Careers open to Chemistry graduates are many and varied. Apart from using their subject knowledge directly in the chemical industry, many chemists branch out into a variety of areas such as the pharmaceutical industry, food processing, forensic science and information technology. Others often move into areas such as accounting, law, finance, sales or business management where their scientific and problem solving skills are much sought after.

Drama and Theatre Studies

Course Overview

Year 1 - AS Level:

Unit 1: Exploration of Drama: Students will practically explore two contrasting play texts and complete exploration notes. Candidates experience live theatre and record their responses to it.

Unit 2: Theatre in Performance: Students take part in an externally examined production of a published play text. In addition, candidates produce a monologue or duologue for external assessment.

Year 2 - A2 Level:

Unit 3: Exploration of Dramatic Performance: Students are required to produce an original piece of theatre to a live audience. The process involves creating a portfolio of exploration notes which are internally assessed.

Unit 4: Theatre in context: This unit takes the form of a 2.5 hour written exam. Students are required to develop ideas from the point of view of a director, working on their interpretation and rehearsal process of a set text. Candidates will also produce a response to a live piece of theatre, comparing the production to the play's original performance.

Assessment

Coursework, practical and written examinations.

Entry requirements

Whilst it is not essential to have studied drama at GCSE, candidates are required to have achieved at least grade C in GCSE English Literature.

Where Can It Lead?

Drama and Theatre Studies A Level can be used to gain entry onto a wide range of Higher Education Courses. Past students have gone onto Drama schools, Oxford University, Manchester University and a host of other leading institutions to study a range of subjects including History, Education Studies, Drama, English and Nursing.

“This year has pushed me to do more than I thought I ever could. The range of skills I have developed has been huge. The physical and intellectual challenge utterly rewarding.”

Kate Lansdale



Economics

Course Overview

You will need to be interested in current affairs and if you like debates and winning your argument you should enjoy Economics. You will study market economics and why markets work, but also where they go wrong and produce outcomes we don't want: poverty, pollution and hospital waiting lists. You will also study the big picture, considering issues such as globalisation and international development.

Assessment

Year 1 - AS Level - 2 modules

- ECON 1: Exam (1.25 hours) completed in June
 - ECON 2: Exam (1.25 hours) completed in June
-

Year 2 - AS Level - 2 modules

- ECON 3: Exam (2 hours) completed in June
 - ECON 4: Exam (2 hours) completed in June
-

Entry requirements

B grade in Maths and English.

Where Can It Lead?

Economics is a well recognised, long established A Level. For those of you thinking about employment after university then you should know that Economics is the most useful degree subject ranked by the CBI. (Confederation of British Industry).

English Language and Literature

Course Overview

If you enjoy exploring fictional and non-fictional texts as well as creative writing then this is an ideal choice for you. You will have the chance to learn the analytical skills required to discuss spoken and written language, and apply this to your own work through a number of imaginative coursework assignments.

Assessment

Year 1 - AS Level

ELLB1: Introduction to Language and Literature.

You will be provided with an anthology of fiction and non-fiction texts - some spoken and some written- that are all based around a particular theme, such as travel and transport or food. This will be an examined unit. (60% of AS).

ELLB2: Themes in Language and Literature.

This coursework unit will require you to study two linked texts and produce two pieces of written work of approximately 2,000 words. You will need to analyse the texts as well as using them as a springboard for creative writing. (40% of AS).

Year 2 - AS Level

ELLB3: Talk in Life and Literature.

For this examined unit, you will investigate a play in class and look at the effect of dramatic dialogue by learning speech theory and spoken language terminology. You will also explore how to analyse talk in real life, and the examination will require you to analyse extracts applying the theoretical skills you have learnt. (30% of A Level).

ELLB4: Text Transformation.

In this exciting unit, you will study a range of drama, poetry and prose from a prescribed list. You will choose two texts to focus on and use them as inspiration for creative writing and also a commentary which allows you to justify the choices that you have made. This will be approximately 2,000 words. (20% of A Level).

Entry requirements

You will need a B grade at GCSE English to access this A Level.

Where Can It Lead?

After this A Level, many students go on to read English at University. It can be useful for journalism, teaching and any other career where the ability to write with precision and skill is required.





“I feel the English literature course has enabled me to develop my personal voice. Set texts are studied and discussed in class; however, there is still flexibility surrounding essay titles and additional texts. This gives you more freedom to explore areas of interest to you.”

Hannah Hardy

English Literature

Course Overview

Do you enjoy reading a range of literature? Do you relish sharing your opinions and interpretations? If so, this course is designed for you. It will develop your critical understanding of texts and sharpen your analytical skills allowing you to read between the lines and make links between what you've read.

Assessment

Year 1 - AS Level

LITA1C: The Struggle for Identity in Modern Literature.

In this examined unit you will be required to annotate an unseen extract and compare it with the wider reading you will have completed. You will also have studied a poetry collection which will be assessed here. (60% of AS)

LITA2: Creative Study coursework.

You will complete two essays totalling 3,000 words. The essays will analyse two texts taught in class. Past texts have been *A Streetcar Named Desire* by Tennessee Williams, *Top Girls* by Caryl Churchill and *The Handmaid's Tale* by Margaret Atwood. (40% of AS)

Year 2 - AS Level

LITA3: Reading for Meaning: Love Through The Ages.

You will have explored writing from throughout different eras in history, and will have become familiar with the different styles of poetry, drama and prose. The theme of 'love' will underpin this unit; be it romantic, patriotic, familial and so on. (30% of A Level)

LITA4: Extended Essay and Shakespeare Study.

In this 3,000 word essay you will make comparisons between three texts that you have studied; focusing on an area of your interest. (20% of A Level)

Entry requirements

You will need to have a grade B at GCSE level in this subject. This is recommended so that you can fully access the course.

Where Can It Lead?

Many students go on to study English at university - either combined with other subjects such as history or philosophy or other literature based options such as American studies. Careers in English are varied and this A Level provides a strong foundation for a multitude of vocations.

EPQ

Course Overview

The extended project enables students to explore an area of personal or academic interest outside of their main programme of study. They will have the opportunity to create an artefact or develop a written piece on any given subject.

Assessment

The final project will be assessed and moderated as a piece of coursework.

Entry requirements

Standard AS requirement.

Where Can It Lead?

The extended project displays the skills of independent learning, research and evaluation vital to both Universities and the workplace.

“The extended project not only helped me get into university but it was also the only time I’ve been able to study something I really wanted to.”

Simone Young-Alls

Fashion & Textiles

Course Overview

Fashion and Textiles will enable students to explore a diverse range of experimentation within the medium of textiles. Work produced for this specification will develop creative skills in surface design techniques, digital design, fashion and fine art approaches. There will be the opportunity to explore materials and techniques through construction, dying and printing. Students will use the visual language of the discipline sensitively and thoughtfully to support their intentions.

Assessment

Year 1 - AS Level

- September - January (60% coursework)
 - February - May
(40% exam and exam preparation time)
-

Year 2 - A2 Level

- September - January (60% coursework)
 - February - May
(40% exam and exam preparation time)
-

Entry requirements

GCSE Art & Design A* - C.

Where Can It Lead?

This will be a fantastic opportunity for students wishing to go onto either an Art Foundation or University courses in a range of different specialisms in Fashion Design, Surface Pattern Design, Printed Textiles and/or Mixed Media Textiles.

“It was a fascinating combination, learning about designing and food manufacture.”

Alec Bishop





Food Technology

Course Overview

This qualification focuses on the key areas that the food industry has to consider, including quality of food, processing of food, packaging, labelling, nutrition, diet, health and safety.

It aims to develop students' knowledge, understanding, skills and applications for designing new food products. Students will be given the opportunity to demonstrate their design and technology capability, along with producing food products that are fit for purpose and satisfy needs.

Assessment

Unit 1: Portfolio of Creative Skills assessed through a Coursework. This is 60% of the AS course marks.

Unit 2: Design and Technology in Practice assessed through an exam. This is 40% of the AS marks.

Unit 3: Food Products, Nutrition and Product Development assessed through an exam. This is 40% of the A2 marks.

Unit 4: Commercial Design assessed through a coursework portfolio. This is 60% of the A2 marks.

Entry requirements

5 GCSE A*-C or equivalent, including English and Maths. Grade B or above in GCSE Food Technology.

Where Can It Lead?

It is an A Level that is relevant to university courses such as Food Technology, Food Science, Dietetics, Nutrition or Consumer Studies. It can also lead to many career opportunities in the food industry.



Geography

Course Overview

This is the study of the natural and human environment and how the two interrelate. Students will study topics such as combating natural hazards, population change and rivers and their management. It is a dynamic subject and students will be encouraged to keep abreast of developments in such diverse fields as environmental care, multicultural relations and international wealth distribution.

Assessment

Year 1 - AS Level

- **GEOG1 - Physical and Human Geography**

70% of AS - 2 hour written examination
Structured short and extended questions.

- **GEOG2 - Geographical Skills**

30% of AS - 1 hour written examination
Structured skills and generic fieldwork questions.

Year 2 - A2 Level

- **Unit 3 - GEOG3 - Contemporary Geographical Issues**

30% of A Level - 2 hour 30 minutes written examination
Structured short and extended questions, plus an essay.

- **GEO4B Geographical Issue Evaluation**

20% of A Level - 1 hour 30 minutes written examination
Structured short and extended questions based on an Advance Information booklet.

Entry requirements

GCSE A* - C.

Where Can It Lead?

Geography is a nationally popular course which is respected by universities and employers for producing students who are well practised and competent in all key skills areas. Its broad content makes it ideal to combine with Arts, Humanities, Languages or Sciences, opening up a wealth of exciting study and employment opportunities.

“ Geography can be applied to many real life situations making it an ideal choice as AS and A-Level. Geography explores both the Physical and Human elements of our planet. As the world is an ever-changing and dynamic place, Geography at Toot Hill constantly develops and adapts to provide valuable transferable skills for the wider world.”

Tom Dodge

History

Course Overview

The course offers both depth and breadth in the study of History. Through the study of early modern English history, French history and modern American history, students get a sense of studying both the past and more recent events. Students get the opportunity to study medieval history, the Tudor monarchs as well as examining the impact of the Vietnam War on the USA. This breadth makes a more rounded student which is appreciated by universities.

Assessment

Year 1 - AS Level

- Two Exams in May
 - The French Revolution 1774-1815 - One paper, 75 mins
 - The USA and Vietnam 1961-75 - One paper, 90 mins
-

Year 2 - Specialist units

- September-December - Personal Study (40% coursework)
 - One exam - The Triumph of Elizabeth 1547-1603 (60%)
-

Entry requirements

History GCSE A*- C OR B grade or above in English.

Where Can It Lead?

Students studying History often go on to study Law, Ancient History, Archaeology, Politics and Journalism. The subject complements any degree very well as it demonstrates high academic ability.

“ I loved coming to History lessons. We studied a variety of really interesting topics and it taught me to be independent and critical.”

Nadia Khalifa

A Level ICT

Course Overview

This course encourages students to become discerning users of ICT, developing a broad range of ICT skills and knowledge and understanding of ICT. This should form a basis for progression into further learning, including progression from AS to A2, and/or employment. Specifically, it encourages students to develop:

- the capacity for thinking creatively, innovatively, analytically, logically and critically;
- the skills to work collaboratively;
- the ability to apply skills, knowledge and understanding of ICT in a range of contexts to solve problems;
- an understanding of the consequences of using ICT on individuals, organisations and society and of social, legal, ethical and other considerations on the use of ICT;
- an awareness of emerging technologies and an appreciation of the potential impact these may have on individuals, organisations and society.

Assessment

Over the TWO year course you will study 4 units. The course is 60% Examination 40% coursework over the 2 years.

Entry requirements

Distinction / Distinction* at BTEC Level 2 or equivalent.

Where Can It Lead?

Technical support; ICT technician; PC sales support; programmer; IT software trainer; systems analyst; multimedia designer; ICT consultant and many more.

“ I studied ICT at Key Stage 4 and opted to do the A Level ICT in Year 12. I really enjoy the subject and the teachers are great. I am looking at studying ICT after I leave college and I feel that what I have learnt at Toot Hill will help me in my further education.”

Harry Cottee

Law

Course Overview

This course is a vital foundation to an understanding of the English legal system. It incorporates topical political issues looking at Police procedure, the courts, as well as the development of the Law. Students will develop academic skills essential to their further education.

Assessment

Year 1 - AS Level

- The English Legal System
 - Sources of Law
-

Year 2 - A2 Level

- Criminal law
-

Entry requirements

Standard AS/A2 requirements with a C or above in English GCSE.

Where Can It Lead?

Solicitor, Barrister, legal secretary, police, business etc.





“A fascinating insight into the workings of the legal system and it’s effects on society.”

Alex Godley

Mathematics

Course Overview

The Mathematics modular AS and A2 courses offer students enriching and rewarding experiences of studying this intriguing and beautiful subject in depth. In addition to the core topics of pure mathematics, students will study the application of mathematics to real world problems related to statistics, the support of decision making and the sciences.

Assessment

Year 1 - AS Level

- Pure Core 1 exam
 - Pure Core 2 and Statistics 1 exams
-

Year 2 - A2 Level

- Pure Core 3 exam
 - Pure Core 4 and Decision 1 exams
-

Entry requirements

Grade A*- B in GCSE Mathematics.

Where Can It Lead?

Studying A Level Mathematics can lead to degree courses. It is welcomed by employers in industry, commerce, finance and services.

“A level Maths will teach you to work hard, to think logically and it also teaches values and skills you can use in real life.”

Matthew Vowels

Further Mathematics

Course Overview

Further Mathematics offers additional challenges and opportunities for deeper study of this fascinating and universal subject. Pure mathematics, alongside modules in mechanics and decision support algorithms, is studied to a level that will provide students with a very secure foundation for university mathematics.

Assessment

Year 1 - AS Level

- Mechanics 1 exam
 - Further Pure 1 and Decision 2 exams
-

Year 2 - A2 Level

- Further Pure 2 and Mechanics 2 exams
 - Further Pure 3 Exam
-

Entry requirements

Grade A*- A in GCSE Mathematics and you must also be studying Mathematics at A level.

Where Can It Lead?

Degree courses in mathematics, science and engineering. Welcomed widely by employers in industry, commerce, finance and services.

“Everything is Maths and if you like Maths that’s great. You’ll love this - it’s amazing!”

Ashleigh Dabell



Media

Course Overview

Media Studies is a popular course at Toot Hill College that offers students a diverse and contemporary curriculum that can be tailored to their interests. With opportunities for extracurricular enrichment and high engagement, it is no surprise that Media students are successful at Toot Hill year on year. The course offers a balance between practical creativity and critical analysis as well as developing many transferrable skills. The course gives students the experience of digital photography, video editing, image manipulation, desktop publishing, website design, blogs and viral marketing campaigns.

The course is designed to allow students to:

- Enhance their enjoyment and appreciation of the media and its role in their daily lives
- Develop critical understanding of the media through engagement with media products and concepts and through the creative application of practical skills
- Explore production processes, technologies and other relevant contexts
- Become independent in research skills and their application in practical work and in developing their own views and interpretations.

Assessment

Year 1 - AS Level (50 % of A2) 2 Units

Unit 1: Externally assessed summer exam (25% of A level, 50% of AS)

Unit 2: Centre assessed production coursework (25% of A level, 50% of AS)

Exam Board: AQA

Year 2 - A Level (50% of A2) 2 Units

Unit 3: Externally assessed summer exam (25% of A level)

Unit 4: Centre assessed critical investigation (essay) and linked production piece (25% of A level)

Entry requirements

Five A* - C Including English (GCSEs in ICT, Media Studies, Business Studies and Art are also desirable but not essential).

Where Can It Lead?

- Degree courses in media, marketing and related fields
- Careers in the media including advertising, marketing and public relations
- Careers in film, TV, radio and journalism

“Media Studies gives you the freedom to be creative and learn skills that will be useful in many jobs like creating websites and filming/editing footage.”

Beth Wakefield

Modern Foreign Languages: French, German and Spanish

Course Overview

You will read and listen to authentic foreign language materials, ranging from magazines and news clips to films and you will study aspects of the contemporary society, cultural background and heritage of France, Spain or Germany. You will extend and develop your knowledge of the grammar and vocabulary of the foreign language and use this to speak, write, read and listen to the language. You will also have opportunities to develop your understanding and awareness of spiritual, moral, ethical, environmental, health and other European and worldwide current issues.

Assessment

Year 1 - AS Level

- **Unit 1:** Spoken expression and response exam 30%
 - **Unit 2:** Understanding and written response exam 70%
-

Year 2 - AS Level

- **Unit 3:** Understanding and spoken response exam 35%
 - **Unit 4:** Research, understanding and written response exam 65%
-

Entry requirements

GCSE A* - C in the language that you wish to study.

Where Can It Lead?

Many careers from business to journalism, teaching and tourism; the possibilities are endless!

“If you talk to a man in a language he understands, that goes to his head. If you talk to him in his own language that goes to his heart.”

Nelson Mandela

“Like Nelson Mandela says, speaking someone else’s language is important as you can really communicate with them. I have loved learning a language at college: I have learnt a lot about the history and culture of the country. A language also looks great on your university application.”

Sarah Jones



A photograph of a person's arm and hand playing a guitar. In the background, there are several black music stands with perforated sheet music. The scene is set in a music room with a plain wall.

“There are a wide range of performance opportunities available to us. We always feel support is at hand and are encouraged to pursue whatever style interests us with regard to performance and composition coursework.”

James Shore

2 Year Course AS/A2 Level

Music

Course Overview

The areas of performing, composing and listening are assessed. Performances are recorded and sent for moderation. Compositions take the form of controlled assessments and are marked externally. The listening is assessed in an examination at the end of the course.

Assessment

Year 1 - AS Level

Performance: A six minute recital on instrument or voice at a minimum of a grade 5 standard.

Composition: A composition chosen from one of four briefs. A full score and recording must be submitted.

Examination: An examination on nine set works from different periods in history and in various musical styles.

Year 2 - A2 Level

Performance: A 12 - 15 minute recital on instrument or voice at a minimum of a grade 6 standard.

Composition: A composition chosen from one of four briefs. A full score and recording must be submitted.

Examination: An examination on twelve set works from different periods in history and in various musical styles.

Technical Study: A harmonisation of a Bach chorale over three hours at the end of the course.

Entry requirements

Grade 5 ABRSM theory and Grade 4 or equivalent standard on an instrument or voice or B grade in GCSE music.

Where Can It Lead?

A Level music can lead to a Music degree at University: course might include teaching; performing; composing; technology; music history.

Philosophy and Ethics

Course Overview

This is a fantastic course designed to open your mind and challenge your beliefs. The course explores the ultimate questions in life and morality.

AS Topics

Ethics: Situation Ethics, Utilitarianism, Abortion, Euthanasia and Saviour Siblings

Philosophy: The Design Argument, Science and Creation, Miracles and Quantum Mechanics

A2 Topics

Ethics: Ways of Making moral Decisions in medical Ethics

Philosophy: Evil and Suffering, Death and The Afterlife, The Meaning of Language, The Ontological Argument

Assessment

Year 1 - AS Level

Philosophy, Religion and Science: Summer Exam 50%

Ethics: Summer Exam 50%

Year 2 - A2 Level

Philosophy of Religion: Summer Exam 50%

Ways of Making Moral Decisions: Summer Exam 50%

Entry requirements

GCSE A*- C.

Where Can It Lead?


This A level can lead to a number of different university courses and careers. Many of our students go onto to study: Biology, Business Studies, Criminology, Law, Philosophy, Physics, Psychology, Medicine, Sociology and Theology.

“Your opinions matter! The relaxed atmosphere allows your thoughts to thrive in discussion and debate, without there always being a definitive right or wrong answer. The subject can be challenging at times but the rewards are definitely reaped, especially when it all ‘clicks’!”

Amy Brodie







“Photography has given me the chance to use the different types of media including digital and traditional techniques. Something other colleges were not offering.”

Josh Morley

2 Year Course AS/A2 Level

Photography

Course Overview

The Photography course aims to provide students with the necessary skills to develop their understanding of traditional and contemporary practices. Work produced for this specification should form a means of personal enquiry and expression involving the selection and manipulation of images. Students must employ creative approaches which go beyond mere observation and recording to begin to understand more complex ideas in design.

Assessment

Year 1 - AS Level

September - January (60% coursework)

February - May (40% exam and exam preparation time)

Year 2 - A2 Level

September - January (60% coursework)

February - May (40% exam and exam preparation time)

Entry requirements

Keen knowledge of photography and understanding of the assessment criteria involved.

Where Can It Lead?

Students go on to further their understanding in a variety of different options whether on an Art Foundation Course, work experiences within the Photography Industry or going onto University courses in Photography or Media.





Physical Education

Course Overview

Students will study a range of theoretical concepts and topics in A-Level PE. At AS level these include; Anatomy and Physiology, Skill Acquisition and Socio Cultural Studies. At A2 the modules build on the knowledge acquired at AS. A2 topics include; Exercise Physiology, Sport Psychology and the History of Sport. Coursework is assessed verbally and examines the candidates' evaluation skills in their main sport.

Assessment

Year 1 - AS Level

40% Practical (2 activities from different areas and verbal evaluation of performance coursework)

60% Written Exam in June covering three topic areas

Year 2 - A2 Level

30% Practical (1 activity and verbal evaluation of performance coursework)

70% Written Exam in June covering three topic areas

Entry requirements

GCSE PE C grade or BTEC Distinction. Students can be accepted with other qualifications at the discretion of the department.

Where Can It Lead?

Physiotherapy, Sports Psychology, Sports Science, Sports and Leisure Management, Teaching, Coaching, Biomechanics.

“The school has supported the development of a number of top class performers, and achieves success in regional and national competitions.”

HMI John Young

Ofsted PE Inspection

“Not only is the universe stranger than we
imagine - it is stranger than we can imagine.”

Chris Rider





2 Year Course AS/A2 Level

Physics

Course Overview

Physics plays a big part in Science and Technology. You will learn the basic theoretical principles underlying the subject. There is a strong emphasis on using these principles to solve problems and answer questions that strike at the fundamental heart of science.

You will learn and develop important investigative skills as you tackle new practical tasks and challenges. Skilful use of equipment will be coupled with powerful analytical and evaluative techniques.

Assessment

Year 1 - AS Level

Unit 1: 'Particles, Quantum Phenomena and Electricity'

Unit 2: 'Mechanics, Materials and Waves'

Unit 3: 'Centre assessed unit' Practical skills

Year 2 - A2 Level

Unit 4: 'Fields and Further Mechanics'

Unit 5: Section A: 'Nuclear and Thermal Physics':

Section B: 'Astrophysics'

Unit 6: 'Centre assessed unit' Practical skills

Entry requirements

It is strongly recommended that you achieve at least a C grade in both GCSE Mathematics and the Sciences.

Where Can It Lead?

This respected qualification is universally valued and allows access to a wide range of careers and further education. These can include Engineering, Medicine, Computer Science, Environmental Science, Geology, Astrophysics and, of course, Physics.

Product Design

Course Overview

Do you have an interest in designing, problem solving and cutting edge technology?

Product Design gives you the opportunity to explore a variety of materials through modelling and prototyping. You will learn how products are made and their impact on society.

Being creative, imaginative and innovative is key to solving problems and coming up with a wide variety of solutions to fit a need.

Assessment

Year 1 - AS Level

Advanced Innovation Challenge - 40%

Design and model in a workshop under examination conditions completing a workbook and question paper.

6 hours of practical designing and modelling.
1 hour review & reflection written paper to follow after the practical exam.

Product Study - 60%

Consisting of product analysis and product development, prototype modelling and testing.

Year 2 - A2 Level

Design, Make & Evaluate - 60%

Produce a coursework portfolio fully demonstrating designing, making & evaluation skills, using creativity, flair & innovation.

Product Design - Written Examination Paper - 40%

2 ½ hour exam focuses on products, applications and analysis of materials, components industrial manufacturing and commercial processes.

Entry requirements

5 GCSEs or equivalent A*-C including English & Maths. Grade B in Technology or equivalent.

Where Can It Lead?

Direct entry into Design related university courses. Industrial, Product, Interior, Theatre, Furniture, Automotive, Engineering.

Industry related employment & apprenticeships.

Foundation Courses in Art & Design.

Psychology

Course Overview

Students will look at how we can understand individuals via different psychological approaches. They will focus on issues such as gender development and mental processes throughout the first year. Following this, students will develop their psychological understanding with childhood development and forensic criminology.

Assessment

Year 1 - AS Level

Unit 1: Introduction to psychology

Unit 2: Understanding individual differences

Year 2 - A2 Level

Unit 3: Applications of psychology

Unit 4: How psychology works

Entry requirements

Standard AS/A2 requirements with a minimum of a grade C in Science at GCSE.

Where Can It Lead?

Psychologist, Research, Business and Education.

“ Psychology is an in-depth, thought-provoking and challenging insight to the mind.”

Millie Dexter

Sociology

Course Overview

Students will be encouraged to think critically about the world they live in. They will explore the idea that people are shaped by society. The students will specifically explore aspects such as family, education and beliefs. During their final year the focus of the course will be on Criminology using Sociological theories to explain the reasons for crime and the different aspects of control.

Assessment

Year 1 - AS Level

Unit 1: written exam on Family

Unit 2: written exam on Education and Methods

Year 2 - A2 Level

Unit 3: written exam on Beliefs

Unit 4: written exam on Criminology

Entry requirements

Standard AS/A2 requirements with a C or above in English GCSE.

Where Can It Lead?

Police force, Human resources, Social Work, Business, Research etc.

BTEC Level 3

Art & Design

(BTEC National Diploma Subsidiary = 1 A Level & National Diploma = 2 A Levels)

Course Overview

Students will learn a range of new exciting techniques as well as focusing on specialist work-related briefs to enable them to extend their knowledge and practical skills. Students will explore direct observational drawings as well as learning about working with new materials and concepts of ideas for industry. Students will be encouraged to pursue their own development to produce unique final designs for the purpose of the brief. Students will organise the end of year Summer Art Exhibition for all Art, Textiles and Photography students which goes towards their portfolio of work.

“The BTEC Course has allowed me to develop my skills as an artist and let me enjoy all aspects of art.”

Kim Bass

Assessment

Year 1 & 2

- **Mandatory Units:** Subsidiary Diploma (40 credits = 4 projects) Diploma (50 credits = 5 projects)
 - **Optional Units:** Subsidiary Diploma (20 credits = 2 specialist projects) Diploma (70 credits = 7 specialist projects)
-

Entry requirements

BTEC-Pass level or GCSE Level-D or above.

Where Can It Lead?

The department has strong links with local Art Foundation Courses to further their study within Art and Design. Students are advised to undertake work experiences placements to support their studies and establish links with professional organisations.

BTEC Level 3

ICT Subsidiary Diploma

Course Overview

The 6-unit National Award is a specialist qualification that focuses on particular aspects of employment within the vocational sector. As such the award offers a qualification which can extend study and provide vocational emphasis for learners. They give learners the knowledge, understanding and skills that they need to prepare for employment. It is broadly equivalent to one GCE A level and is graded Pass, Merit or Distinction (P, M, D).

Assessment

Over the TWO year course you will study 12 units. The course is 100% course work and is assessed by your teacher. Assessment techniques include: reports, video, blogs, websites and presentations.

Typical units include:

-
- Communication and Employability Skills for IT
-
- Computer Systems
-
- Advanced Database Skills
-
- Advanced Spreadsheet Skills
-
- Digital Graphics and Computers
-
- Website Production and Management
-

Entry requirements

You will need to have studied for an ICT qualification at a GCSE level.

Where Can It Lead?

Typical career paths include:

Technical support/helpdesk / ICT technician /
PC sales support / Programmer IT software trainer /
Systems analyst / Multimedia designer / ICT consultant /
and many more.

“I wouldn’t be where I am today if it wasn’t for the course I studied at Toot Hill College; the course taught me more than I could ever ask for, elements and training which will help me further my career within IT.

From this came an apprenticeship, which I wouldn’t be able to fully participate in if I did not have the foundation knowledge the course had given me.”

James Markwick

BTEC Level 3 ICT Diploma

Course Overview

The 12-unit National Award is a specialist qualification that focuses on particular aspects of employment within the vocational sector. As such the award offers a qualification which can extend study and provide vocational emphasis for learners. They give learners the knowledge, understanding and skills that they need to prepare for employment. It is broadly equivalent to TWO GCE A levels and is graded Pass, Merit or Distinction (P, M, D).

Assessment

Over the TWO year course you will study 12 units. The course is 100% course work and is assessed by your teacher. Assessment techniques include: reports, video, blogs, websites and presentations.

Typical units include:

-
- Communication and Employability Skills for IT
-
- Computer Systems
-
- Information Systems
-
- Advanced Database Skills
-
- Advanced Spreadsheet Skills
-
- Computer Animation
-
- Impact of the Use of IT on Business Systems
-
- Digital Graphics and Computers
-
- Website Production and Management
-

Entry requirements

You will need to have studied for an ICT qualification at GCSE level.

Where Can It Lead?

Typical career paths include:

Technical support/helpdesk / ICT technician /
PC sales support / Programmer IT software trainer /
Systems analyst / Multimedia designer / ICT consultant /
and many more.





“ Participating within an apprenticeship is not as easy as it sounds. The criteria you have to meet is exceptionally harder than I originally thought, but from the knowledge I was taught during my A-Level period at Toot Hill I have managed to find my feet within the working world. The course does give you insights into topics and problems which do arise in the IT world. Eventually I want to work within the Network Security side of IT, hopefully within a large business and definitely without attending the course at Toot Hill, I would never achieve that goal.”

Charlotte Stott

BTEC Level 3 Diploma Sport/Subsidiary Diploma in Sport

Course Overview

Our BTEC Sport courses prepare you perfectly for a wide variety of careers in the health and fitness industry. They are valued by colleges, universities and employers across the UK. Through studying multiple units, you'll develop a deep understanding of sport and its application in the workplace; from psychology, personal training and physiology to nutrition, performance analysis and injury. You'll also add key transferrable skills to your CV such as organisation, leadership, communication and team work - key skills that universities and employers look for. To complement your breadth of experience, you'll develop a coaching proficiency through your reserved place on the CSLA course and work placements with the PE Department.

Assessment

No Exams - 100% coursework.

Entry requirements

6 x GCSEs (C+) including two from English, Maths, Science & PE. Strong interest & regular participation in sport.

Where Can It Lead?

Learners can progress into Higher Education at College or University, start apprenticeships or begin careers related to health and fitness, coaching and sports development.

“BTEC Sport is a brilliant subject to take if you want to further develop your knowledge of sport. I have learnt so many new skills which is a credit to the course.”

Harley Cox

BTEC Level 3 Diploma Applied Science

Course Overview

The BTEC 3 Diploma in Applied Science provides a vocational approach to the study of the sciences. Students will gain knowledge, understanding and skills through a series of work-based assignments involving a large proportion of practical activities.

Assessment

Assessment is conducted entirely through coursework in the form of practical reports, presentations and field work.

Year 1 - Core units

- Units covering the fundamentals of applied science.

Year 2 - Specialist units

- Physiology of Human body systems
 - Microbiological techniques
 - Practical chemical analysis
 - Chemical laboratory techniques
 - Medical physics
 - Astronomy
-

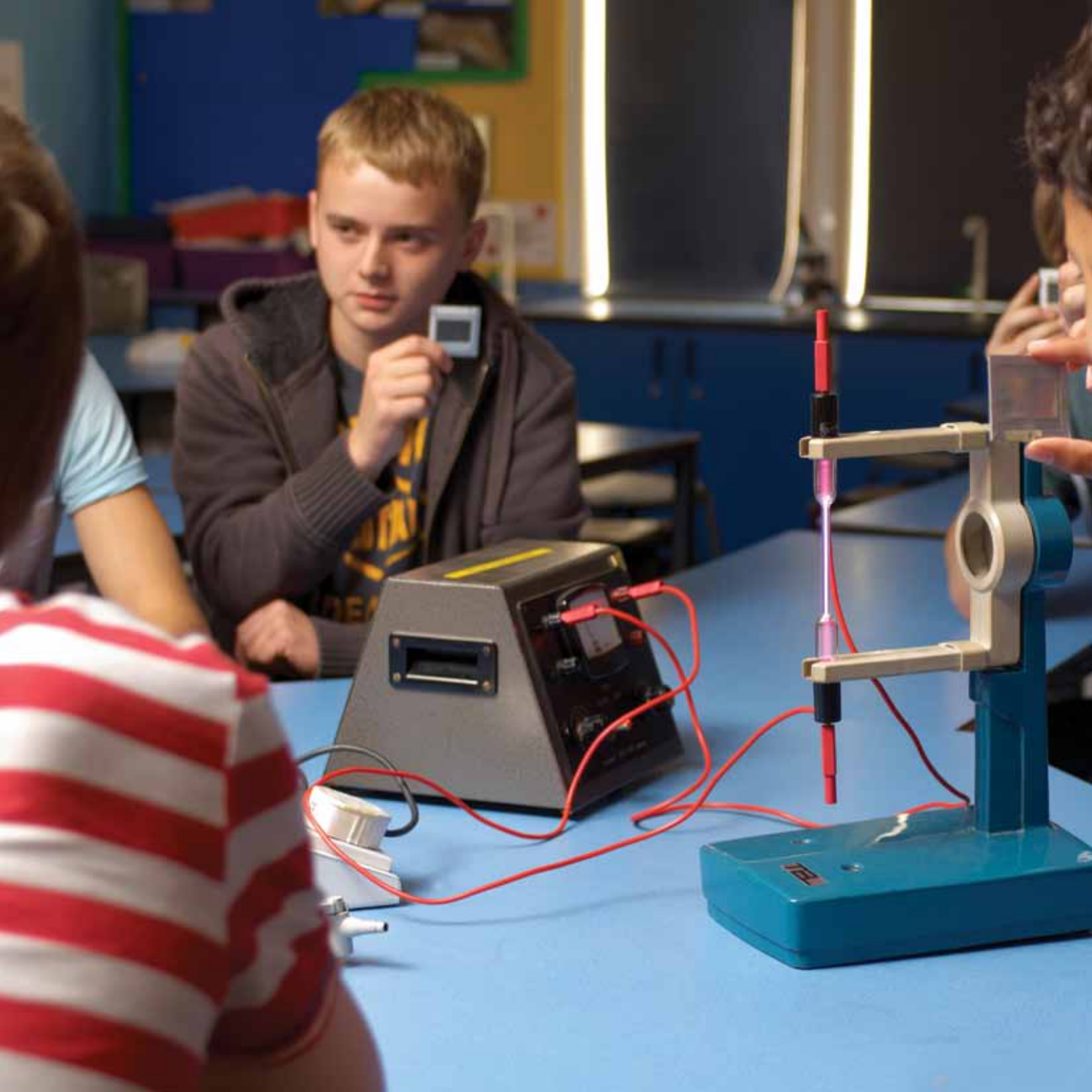
Entry requirements

BTEC Level 2 Diploma - PASS or GCSE Core and Additional Science - grade C

Where Can It Lead?

Learners can progress into employment in a technical or scientific workplace or continue their study in vocational areas.

Previous students have successfully gained university places on vocational courses such as 'Veterinary nursing and practice management' and 'computer science'.





“The lessons were really fun because there we had to apply the theory to practical sessions in the laboratory. We even saw some of these investigations take place in a local University visit.”

Louisa Foster

CACHE Level 3 Diploma Childcare and Education

Course Overview

The CACHE Level 3 Diploma in Childcare and Education is one of the most recognised qualifications at this level for students wishing to go into Early Years care or education, with an option of continuing into further study at University. The Diploma consists of academic and practical elements, with three days spent in college studying theories of care and education and two days spent in placement in an Early Years setting, developing practical employment skills.

Assessment

The CACHE Diploma is an assignment based course, with 12 assignments completed over the two years. In year 1 there is a further, short examination based on a pre-seen case study, and in Year 2 a detailed independent research project has to be completed alongside the compulsory 12 units.

Entry requirements

5 GCSEs A-C, including English, Maths & Science. Good passes in core subjects are necessary for employment in child care and education upon completion of the Diploma.

Where Can It Lead?

Students completing the CACHE Diploma have gone on to employment as Early Years Practitioners in nursery settings, while others have used the UCAS points accredited to secure places at university to study Undergraduate Degrees in Primary Teaching.

“ Getting to study theories of child care and education at college and getting to put it into practice in a setting every week has made me feel very confident in my skills. I know this course will help me to reach my goal of working with children.”

Grace Francis

Application Form 2013

Please complete this form USING BLOCK CAPITALS

Personal Details	
Surname	First Name
Middle Name	
DOB	
Address to which correspondence should be sent to:	
Postcode	
Contact Numbers	
Home	
Work	
Mobile	
Email	
Additional Needs/Extra Support	
The College values all students and acknowledges differences and will support all learners. Therefore please answer the following questions	
Do you have any specific health/medical conditions that we need to know about? (to be discussed at interview)	Yes <input type="checkbox"/> No <input type="checkbox"/>
Do you need support or is your condition self-managed?	Self-managed <input type="checkbox"/> Supported <input type="checkbox"/>
Do you have additional learning need which will require extra support? (eg. Dyslexia)	Yes <input type="checkbox"/> No <input type="checkbox"/>
Have you been identified/supported by your school for a particular need?	Yes <input type="checkbox"/> No <input type="checkbox"/>

Personal Identity	
How would you describe your ethnic origin or personal identity? (Please tick one.)	
Asian or Asian British	Black or Black British
<input type="checkbox"/> Bangladeshi	<input type="checkbox"/> Black African
<input type="checkbox"/> Indian	<input type="checkbox"/> Black Caribbean
<input type="checkbox"/> Pakistani	<input type="checkbox"/> Any other black background
<input type="checkbox"/> Other Asian background	
Chinese	Mixed Ethnic Origin
<input type="checkbox"/> Chinese	<input type="checkbox"/> White and Asian
	<input type="checkbox"/> White and Black African
	<input type="checkbox"/> White and Black Caribbean
White	<input type="checkbox"/> Any other mixed background
<input type="checkbox"/> White British	Other Ethnic Groups
<input type="checkbox"/> White Irish	
<input type="checkbox"/> Other white background	

School or College Details	
School/College	
Name of Tutor supplying report/reference	
School Telephone No.	
Date from:	
Date to:	

Examination Details				Examination Details			
Subject	Type of Qualification; e.g. GCSE / A LEVELS / BTEC:	Year of Exam or completed:	Predicted or achieved grades:	Subject	Type of Qualification; e.g. GCSE / A LEVELS / BTEC:	Year of Exam or completed:	Predicted or achieved grades:

Personal Statement: We would like to know more about you; why you would like to do this course and about your plans for the future. Therefore in your own handwriting, please provide further relevant information, including voluntary work, hobbies, interests, sports activities etc.

Please complete on a separate sheet and attach to this form.

Publicity Material - How did you find out about the college?

Already at Toot Hill School
 ☐

Newspaper/Advertisement
 ☐

School Advisor/Tutor
 ☐

Careers Office/ Connexions
 ☐

Local Radio
 ☐

Friend/Relative
 ☐

Website
 ☐

Any Other
 ☐

Equality

Toot Hill College positively welcomes students from all communities. Our equality and diversity policy is designed to ensure everyone is treated with respect, irrespective of race, gender, disability, sexual orientation or social class.

Signature of applicant:

Please print Name:

Date:

Provisional Subject Choices

Level 3 (equivalent to 1 GCE A Level)	Level 3 BTEC Diploma (equivalent to 2 GCE A Levels)
	Level 3 BTEC Subsidiary Diploma (equivalent to 1 GCE A Level)

For college use:



TOOT·HILL COLLEGE

BINGHAM • NOTTINGHAM

Toot Hill College,
The Banks, Bingham,
Nottingham NG13 8BL

Tel. 01949 863072
Fax. 01949 875551
E-mail. college.admin@toothill.notts.sch.uk
Web. www.toothillcollege.co.uk

Head of College:
Karen Strachan
Executive Head Teacher:
John Tomasevic
B.A. (Hons) Econ, Cert.Ed., M.Ed., NPQH, NLE



TORCH
ACADEMY GATEWAY

Toot Hill College is a member of the Torch Academy Gateway
www.torchacademy.co.uk

